

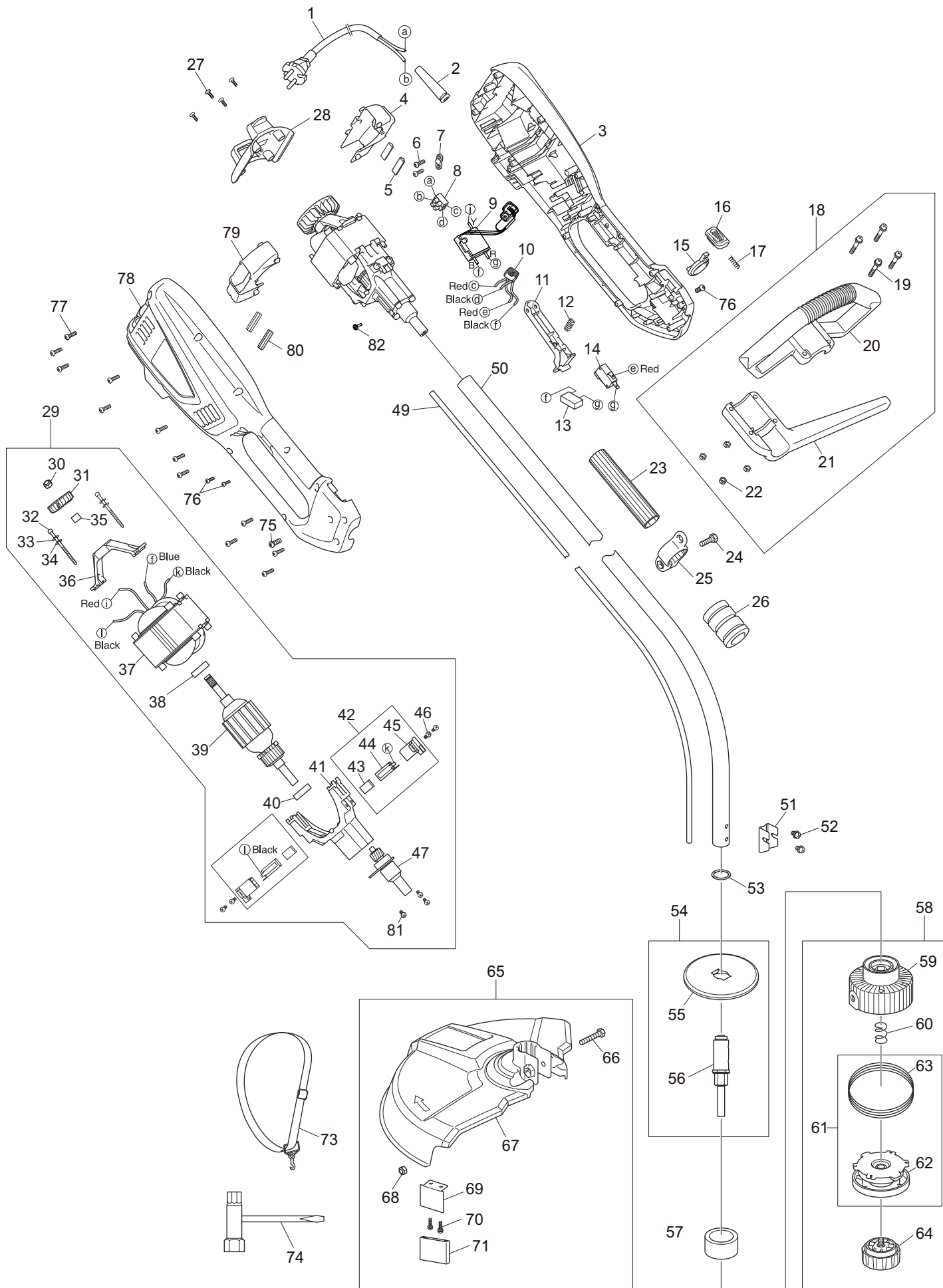


Ersatzteilliste
Spare Parts List

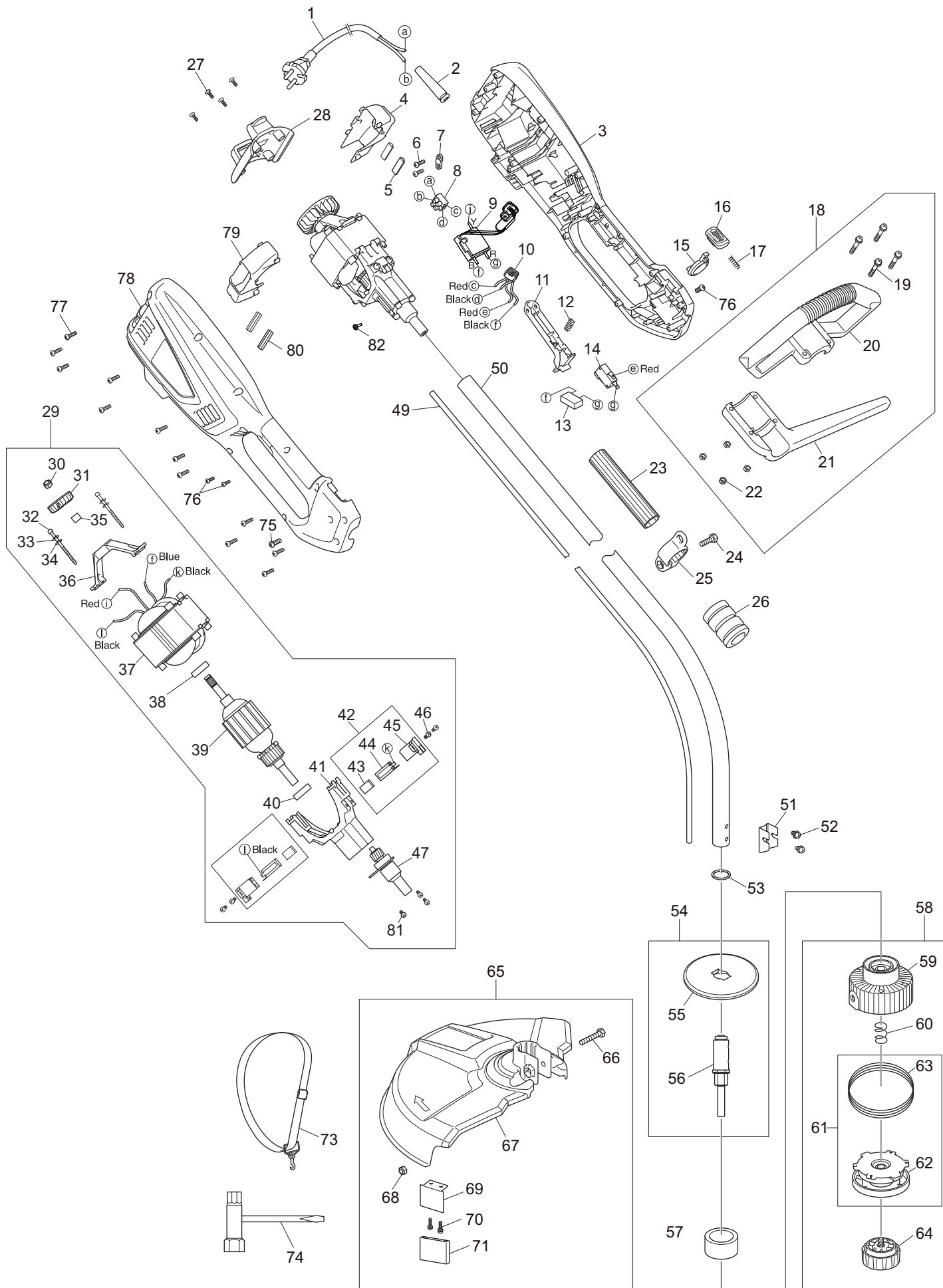
2015-12

ET-71 C
UR3500

(D, GB)



Seite / Page	Pos.	ET-71 C	UR3500	Teil-Nr. Part No.	Hinweise Notes	Bezeichnung	Spezifikation Specification	Description
1	1	1	1	YA00000497		ANSCHLUSSLEITUNG	VDE L=430 H05VV-F2x0,75m m2	POWER CORD & PLUG
1	2	1	1	YA00000516		ZUGENTLASTUNG		CABLE PROTECTOR
1	3	1		YA00000661		GEHÄUSE-SET	Dolmar rot INC. 78	HOUSING ASSEMBLY
1	3		1	YA00000660		GEHÄUSE-SET	MAKITA blau INC. 78	HOUSING ASSEMBLY
1	4	1	1	YA00000562		LÜFTERGEHÄUSE LINKS		LEFT VOLUTE CASE
1	5	2	2	YA00000514		GUMMI		RUBBER PAD
1	6	2	2	YA00000618		BLECHSCHRAUBE	ST4x14	TAPPING SCREW
1	7	1	1	YA00000547		KABELKLEMMPLATTE		CABLE PRESS BOARD
1	8	2	2	YA00000501		LÜSTERKLEMME		TERMINAL SET
1	9	1	1	YA00000643		ELEKTRONIK		PCB CONTROL BOARD
1	10	1	1	YA00000499		DROSSEL		INDUCTANCE
1	11	1	1	YA00000554		SCHALTERHEBEL		SWITCH TRIGGER
1	12	1	1	YA00000513		FEDER		SPRING
1	13	1	1	YA00000498		KONDENSATOR	0,33µF	CAPACITOR
1	14	1	1	YA00000555		SCHALTER		SWITCH
1	15	1	1	YA00000539		ROHRDURCHFÜHRUNG		SPACING COLLAR
1	16	1	1	YA00000525		DRUCKKNOPF		PUSH BUTTON
1	17	1	1	YA00000511		DRUCKFEDER		COMPRESSION SPRING
1	18	1	1	YA00000620		BÜGELGRIFF KPL.	INC. 19-22	AUXILIARY HANDLE ASSEMBLY
1	19	4	4	YA00000621		KOMBI-SCHRAUBE	M5x30	SLOT THREE COMBINED NYLOC
1	20	1	1	YA00000564		BÜGELGRIFF		AUX.HANDLE COVER
1	21	1	1	YA00000563		SEITENGRIF		AUX.HANDLE SUPPORT
1	22	4	4	YA00000622		SICHERUNGSMUTTER	M5	SELF-LOCKING NUT
1	23	1	1	YA00000623		ISOLIERSCHLAUCH		INSULATING SHEATH
1	24	1	1	YA00000624		KOMBI-SCHRAUBE	M6x20	PAN HEAD MACHINE SCREW
1	25	1	1	YA00000541		HALTERING F. SCHULTERGURT		SHOULDER BELT RING
1	26	1	1	YA00000521		GUMMIABDECKUNG		RUBBER COVER
1	27	4	4	YA00000453		BLECHSCHRAUBE	ST4,2x10	PLUM SELF TAPPING SCREW
1	28	1	1	YA00000560		MOTORGEHÄUSEABDECKUNG		REAR COVER
1	29	1	1	YA00000645		MOTOR KPL.	230V/700W INC. 30-41,43-47, 81	MOTOR ASSY
1	30	1	1	YA00000627		SICHERUNGSMUTTER	M6	SELF-LOCKING NUT
1	31	1	1	YA00000507		IMPELLER		IMPELLER
1	32	2	2	YA00000538		SCHRAUBE	M4x55	SCREW
1	33	2	2	YA00000523		FEDERUNTERLAGE	φ4	SPRING PAD
1	34	2	2	YA00000524		FLACHSCHEIBE	A3	FLAT WASHER
1	35	1	1	YA00000531		BUCHSE		SLEEVE
1	36	1	1	YA00000526		TRÄGER		REAR BRACKET
1	37	1	1	YA00000506		FELD	230V/50Hz 700W	STATOR ASSY
1	38	1	1	YA00000431		RILLENKUGELLAGER	608	BEARING
1	39	1	1	YA00000646		ANKER		ROTOR ASSEMBLY
1	40	1	1	YA00000430		RILLENKUGELLAGER	ø22xø10x6	BEARING
1	41	1	1	YA00000629		LAGERSCHILD B		REAR BRACKET ASSEMBLY
1	42	2	2	YA00000489		KOHLEBÜRSTE KPL.	INC. 43-45	CARBON BRUSH ASSY
1	43	2	2	652023960		KOHLEBÜRSTE	2 PCS/SET	CARBON BRUSH
1	44	2	2	YA00000502		KOHLEBÜRSTENANSCHLUSS		COPPER BRUSH HOLDER
1	45	2	2	YA00000503		BÜRSTENHALTER		BRUSH HOLDER
1	46	4	4	YA00000630		KOMBI-SCHRAUBE	M4x12	THREE COMBINATION SCREW
1	47	1	1	YA00000483		ROHRANSCHLUSS KPL.		SHAFT ASSY
1	49	1	1	YA00000551		FLEXIBLE WELLE		FLEXIBLE SHAFT
1	50	1	1	YA00000495		ROHR		TUBE ASS'Y
1	51	1	1	YA00000527		BEFESTIGUNGSBLECH		FIXING FRAME
1	52	2	2	YA00000647		KOMBI-SCHRAUBE	M5x10	THREE COMBINATION MACHINE SCREW
1	53	1	1	YA00000534		DICHTRING		SEALING RING
1	54	1	1	YA00000485		WELLE	INC. 55-56	OUTPUT SHAFT ASS'Y
1	55	1	1	YA00000432		WICKELSCHUTZ		WINDING PREVENTER
1	56	1	1	YA00000648		WELLE		SHAFT JOINT ASSEMBLY
1	57	1	1	YA00000568		STAUBDICHTUNG		DUST SEAL
1	58	1	1	YA00000649		FADENKOPF	INC. 59-60,62-64	TRIMMER HEAD ASS'Y
1	59	1	1	YA00000650		GEHÄUSE		CASE
1	60	1	1	YA00000512		DRUCKFEDER		COMPRESSION SPRING



Seite / Page	Pos.	ET-71 C	UR3500	Teil-Nr. Part No.	Hinweise Notes	Bezeichnung	Spezifikation Specification	Description
1	61	1	1	YA00000651		SPULE MIT FADEN	INC. 62-63	SPOOL WITH LINE
1	62	1	1	YA00000476		SPULE		SPOOL
1	63	1	1			MÄHFADEN	ø 2,0 mm	NYLON LINE
1	64	1	1	YA00000652		KNOPF		KNOB ASSEMBLY
1	65	1	1	YA00000653		SCHUTZHAUBE KPL.	INC. 66-71	PROTECTOR ASS'Y
1	66	1	1	YA00000654		SCHRAUBE	M6x35	BOLT
1	67	1	1	YA00000544		SCHUTZHAUBE		PROTECTOR
1	68	1	1	YA00000627		SICHERUNGSMUTTER	M6	SELF-LOCKING NUT
1	69	1	1	YA00000529		FADENMESSER		LINE CUTTER
1	70	2	2	YA00000655		SICHERUNGSSCHRAUBE	ST4x12	SELF-LOCKING SCREW
1	71	1	1	YA00000518		MESSERSCHUTZ		BLADE COVER
1	73	1	1	YA00000639		SCHULTERGURT		STRAP
1	74	1	1	YA00000437		KOMBISCHLÜSSEL		BOX WRENCH
1	75	2	2	YA00000451		SCHRAUBE	M5x10	SCREW
1	76	2	2	YA00000641		BLECHSCHRAUBE	ST3x10	PLUM SELF TAPPING SCREW
1	77	12	12	652023653		SCHRAUBE SELBSTSCHNEIDEND	4x16	SELF-TAPPING SCREW
1	78	1		YA00000661		GEHÄUSE-SET	Dolmar rot INC. 3	HOUSING ASSEMBLY
1	78		1	YA00000660		GEHÄUSE-SET	MAKITA blau INC. 3	HOUSING ASSEMBLY
1	79	1	1	YA00000561		LÜFTERGEHÄUSE RECHTS		RIGHT VOLUTE CASE
1	80	2	2	YA00000514		GUMMI		RUBBER PAD
1	81	3	3	YA00000630		KOMBI-SCHRAUBE	M4x12	THREE COMBINATION SCREW
1	82	1	1	YA00000657		KREUTZSCHLITZSCHRAUBE	M3x6	CROSS RECESSED HEAD SCREW

ET-71 C, UR3500



1 ET-71 C, UR3500
ET-71 C, UR3500

	Zeichenerklärung	Key to symbols
=> 1999999 2000000 => 2003.04 => TI 2003/07 Acc. = { m Corr.	Produktion bis Serien-Nr. Neues Teil ab Serien-Nr. Neues Teil ab Jahr / Monat Siehe Technische Information Jahr / Nr. Zubehör (nicht im Lieferumfang) Keine Serienausführung, jedoch verwendbar Beinhaltet Positions-Nr. Meterware Druckfehlerberichtigung	Production to serial number New part from serial number New part from Year / Month See Technical Information Year / No. Accessories (not included in the delivery inventory) No standard execution, may be used Contains item number Sold by the meter Error correction
	Änderungen vorbehalten	Specifications subject to change without notice