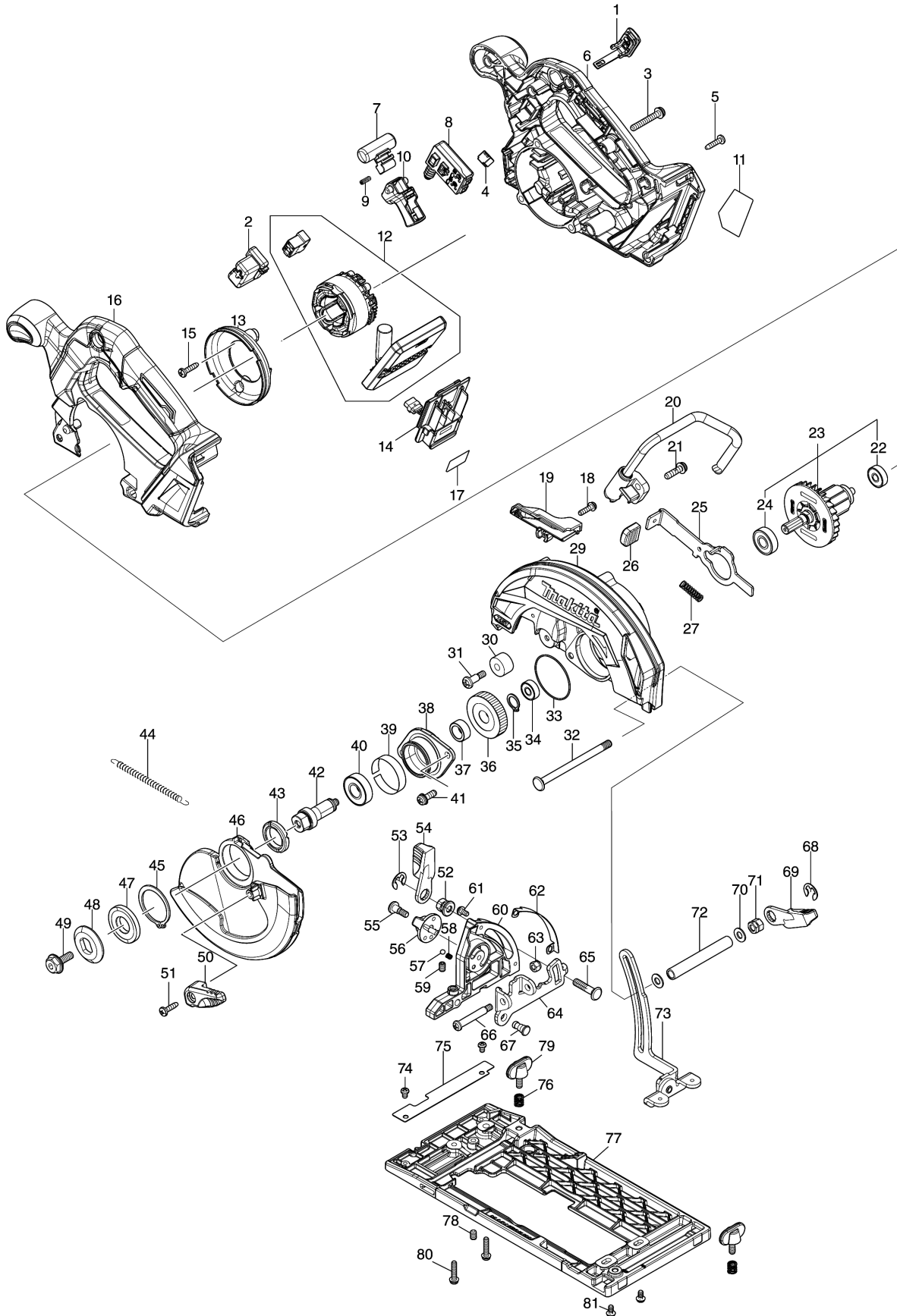


Model No.HS012G 165MM CORDLESS CIRCULAR SAW



Model No.HS012G 165MM CORDLESS CIRCULAR SAW

| Position | Artikel-Nr. | Beschreibung | I/C | Stk. | New/Old | Opt. 1 | Opt. 2 | Hinweis |
|----------|-------------|---------------------------|-----|------|---------|--------|--------|---------|
| 001 | 140G30-2 | CAP COMPLETE | | 1 | | | | |
| C10 | 213A05-9 | O-RING16 | | 1 | | | | |
| 002 | 459256-6 | HOLDER | | 1 | | | | |
| 003 | 911258-5 | PAN HEAD SCREW M5X35 | | 3 | | | | |
| 004 | 620936-3 | LED CIRCUIT | | 1 | | | | |
| 005 | 265995-6 | TAPPING SCREW 4X18 | | 8 | | | | |
| 006 | 136839-6 | MOTOR HOUSING ASSEMBLY | | 1 | | | | |
| C10 | 263005-3 | RUBBER PIN 6 | | 1 | | | | |
| 007 | 419704-7 | LOCK OFF BUTTON | | 1 | | | | |
| 008 | 650008-0 | SWITCH C3XB-1LPSPM | | 1 | | | | |
| 009 | 231433-0 | COMPRESSION SPRING 4 | | 1 | | | | |
| 010 | 413N46-5 | SWITCH LEVER | | 1 | | | | |
| 011 | 8586D6-4 | HS012G NAME PLATE | | 1 | | | | |
| 012 | 629B81-3 | STATOR COMPLETE | | 1 | | | | |
| 013 | 413N45-7 | BAFFLE PLATE | | 1 | | | | |
| 014 | 632P65-6 | TERMINAL UNIT | | 1 | | | | |
| 015 | 265995-6 | TAPPING SCREW 4X18 | | 2 | | | | |
| 016 | 136840-1 | HANDLE COVER ASSEMBLY | | 1 | | | | |
| C10 | 263005-3 | RUBBER PIN 6 | | 1 | | | | |
| 017 | 8586E4-5 | HS012G SERIAL NO. LABEL | | 1 | | | | |
| 018 | 911128-8 | P.H.SCREW M4X16 WITH WR | | 1 | | | | |
| 019 | 455483-3 | DUCT | | 1 | | | | |
| 020 | 122D67-3 | HOOK ASSEMBLY | | 1 | | | | |
| 021 | 911233-1 | PAN HEAD SCREW M5X20 | | 2 | | | | |
| 022 | 210022-4 | BALL BEARING 626DDW | | 1 | | | | |
| 023 | 519778-9 | ROTOR ASSEMBLY | | 1 | | | | |
| D10 | | INC. 22,24 | | | | | | |
| 024 | 211491-2 | BALL BEARING 609DDW | | 1 | | | | |
| 025 | 346837-4 | SHAFT LOCK | | 1 | | | | |
| 026 | 286039-9 | CAP | | 1 | | | | |
| 027 | 233117-6 | COMPRESSION SPRING 6 | | 1 | | | | |
| 029 | 183Y42-0 | BLADE CASE SET | | 1 | | | | |
| C10 | 213953-6 | O RING 24 | | 1 | | | | |
| C20 | 8007R2-2 | XGT LOGO LABEL | | 1 | | | | |
| 030 | 262552-1 | RUBBER SLEEVE 6 | | 1 | | | | |
| 031 | 265115-2 | + PAN HEAD SCREW M5 | | 1 | | | | |
| 032 | 266194-3 | FLAT HEAD SCREW M6X90 | | 1 | | | | |
| 033 | 213565-5 | O RING 42 | | 1 | | | | |
| 034 | 210206-4 | BALL BEARING 606ZZ | | 1 | | | | |
| 035 | 961052-5 | RETAINING RING (EXT) S-12 | | 1 | | | | |
| 036 | 227A40-1 | HELICAL GEAR 52 | | 1 | | | | |
| 037 | 257349-1 | SLEEVE 12 | | 1 | | | | |

Please order the parts with part number.

Print Date 12/1/2023

Model No.HS012G 165MM CORDLESS CIRCULAR SAW

| Position | Artikel-Nr. | Beschreibung | I/C | Stk. | New/Old | Opt. 1 | Opt. 2 | Hinweis |
|----------|-------------|----------------------------------|-----|------|---------|--------|--------|---------|
| 038 | 319212-7 | BEARING BOX | | 1 | | | | |
| 039 | 347B30-5 | THICKNESS RING 34 | | 1 | | | | |
| 040 | 211131-2 | BALL BEARING 6001DDW | | 1 | | | | |
| 041 | 911223-4 | PAN HEAD SCREW M5X16 | | 2 | | | | |
| 042 | 326459-6 | SPINDLE | | 1 | | | | |
| 043 | 285845-9 | BEARING RETAINER 19-29 | | 1 | | | | |
| 044 | 231878-2 | TENSION SPRING 4 | | 1 | | | | |
| 045 | 961152-1 | RETAINING RING (EXT) S-34 | | 1 | | | | |
| 046 | 312D77-0 | SAFETY COVER | | 1 | | | | |
| 047 | 224593-5 | INNER FLANGE 35 | | 1 | | | | |
| 048 | 224409-4 | OUTER FLANGE 35 | | 1 | | | | |
| 049 | 266924-2 | HEX. SOCKET HEX. BOLT M6X18 | | 1 | | | | |
| 050 | 271474-4 | LEVER 37 | | 1 | | | | |
| 051 | 266034-5 | TAPPING SCREW CT 4X16 | | 1 | | | | |
| 052 | 252320-0 | HEX. NUT M6 | | 1 | | | | |
| 053 | 257982-9 | BOW STOP RING E-8 | | 1 | | | | |
| 054 | 271446-9 | LEVER 45 | | 1 | | | | |
| 055 | 251370-2 | + PAN HEAD SCREW M5 | | 1 | | | | |
| 056 | 413N47-3 | DIAL 27 | | 1 | | | | |
| 057 | 216008-6 | STEEL BALL 4 | | 1 | | | | |
| 058 | 233314-4 | COMPRESSION SPRING 4 | | 1 | | | | |
| 059 | 266436-5 | H.S.SET SCREW(FLAT POINT)M5X8 | | 1 | | | | |
| 060 | 312D78-8 | ANGULAR PLATE | | 1 | | | | |
| 061 | 251358-2 | + PAN HEAD SCREW M4X8 | | 2 | | | | |
| 062 | 347A92-7 | BEVEL GUIDE | | 1 | | | | |
| 063 | 252103-8 | HEX. LOCK NUT M5-8 | | 1 | | | | |
| 064 | 347A90-1 | ANGULAR GUIDE | | 1 | | | | |
| 065 | 266309-2 | CAP SQUARE NECK BOLT M6X26 | | 1 | | | | |
| 066 | 265056-2 | + PAN HEAD SCREW M5 | | 1 | | | | |
| 067 | 256511-5 | SHOULDER PIN 6-7 | | 1 | | | | |
| 068 | 257982-9 | BOW STOP RING E-8 | | 1 | | | | |
| 069 | 271446-9 | LEVER 45 | | 1 | | | | |
| 070 | 941151-9 | FLAT WASHER 6 | | 2 | | | | |
| 071 | 264103-6 | HEX. NUT M6 | | 1 | | | | |
| 072 | 332126-3 | PIPE 6 | | 1 | | | | |
| 073 | 162C19-6 | DEPTH GUIDE COMPLETE | | 1 | | | | |
| 074 | 911102-6 | PAN HEAD SCREW M4X6 | | 2 | | | | |
| 075 | 347A93-5 | TOP GUIDE | | 1 | | | | |
| 076 | 231456-8 | COMPRESSION SPRING 7 | | 2 | | | | |
| 077 | 312D76-2 | BASE | | 1 | | | | |

Please order the parts with part number.

Print Date 12/1/2023

Model No.HS012G 165MM CORDLESS CIRCULAR SAW

| Position | Artikel-Nr. | Beschreibung | I/C | Stk. | New/Old | Opt. 1 | Opt. 2 | Hinweis |
|----------|-------------|--------------------------------|-----|------|---------|--------|--------|---------|
| 078 | 266436-5 | H.S.SET SCREW(FLAT POINT)M5X8 | | 1 | | | | |
| 079 | 265720-5 | THUMB SCREW M5X14 | | 2 | | | | |
| 080 | 911138-5 | P.H.SCREW M4X20 WITH WR | | 2 | | | | |
| 081 | 265648-7 | PAN HEAD SCREW M4X8 | | 2 | | | | |
| A01 | 783203-8 | HEX. WRENCH 5 | | 1 | | | | |
| A02 | 196961-1 | DUST NOZZLE SET | | 1 | | | | |
| C10 | 911128-8 | P.H.SCREW M4X16 WITH WR | | 1 | | | | |
| A03 | B-62985 | TCT BLADE165X25T WOOD EFFICUT | | 1 | | | | |
| A04 | 164095-8 | GUIDE RULE | | 1 | | | | |
| A05B | 821551-8 | CONNECTOR PLASTIC CASE (TYPE3) | | 1 | | | | |
| C10 | 453974-8 | LATCH | | 4 | | | | |
| A05C | 821551-8 | CONNECTOR PLASTIC CASE (TYPE3) | | 1 | | | | |
| C10 | 453974-8 | LATCH | | 4 | | | | |
| A06B | 8065G4-7 | HS012GZ01 INDICATION LABEL | | 1 | | | | |
| A06C | 8065G6-3 | HS012GD201 INDICATION LABEL | | 1 | | | | |
| A07B | 8065G5-5 | HS012GZ01 PLASTIC CASE LABEL | | 2 | | | | |
| A07C | 8065G7-1 | HS012GD201 PLASTIC CASE LABEL | | 2 | | | | |
| A08B | 8357J2-7 | INNER TRAY | | 1 | | | | |
| A08C | 8357J2-7 | INNER TRAY | | 1 | | | | |
| A09C | 412393-7 | BATTERY COVER | | 1 | | | | |
| A10C | ***DC40RA | DC40RA FAST CHARGER | | 1 | | | | |
| D10 | | COMPO-PARTS | | | | | | |
| A11C | 191B36-3 | BATTERY BL4025 SET | | 2 | | | | |
| F23 | 198885-7 | GUIDE RAIL CONNECTOR SET(EU) | | 1 | | | | |

Please order the parts with part number.

Print Date 12/1/2023