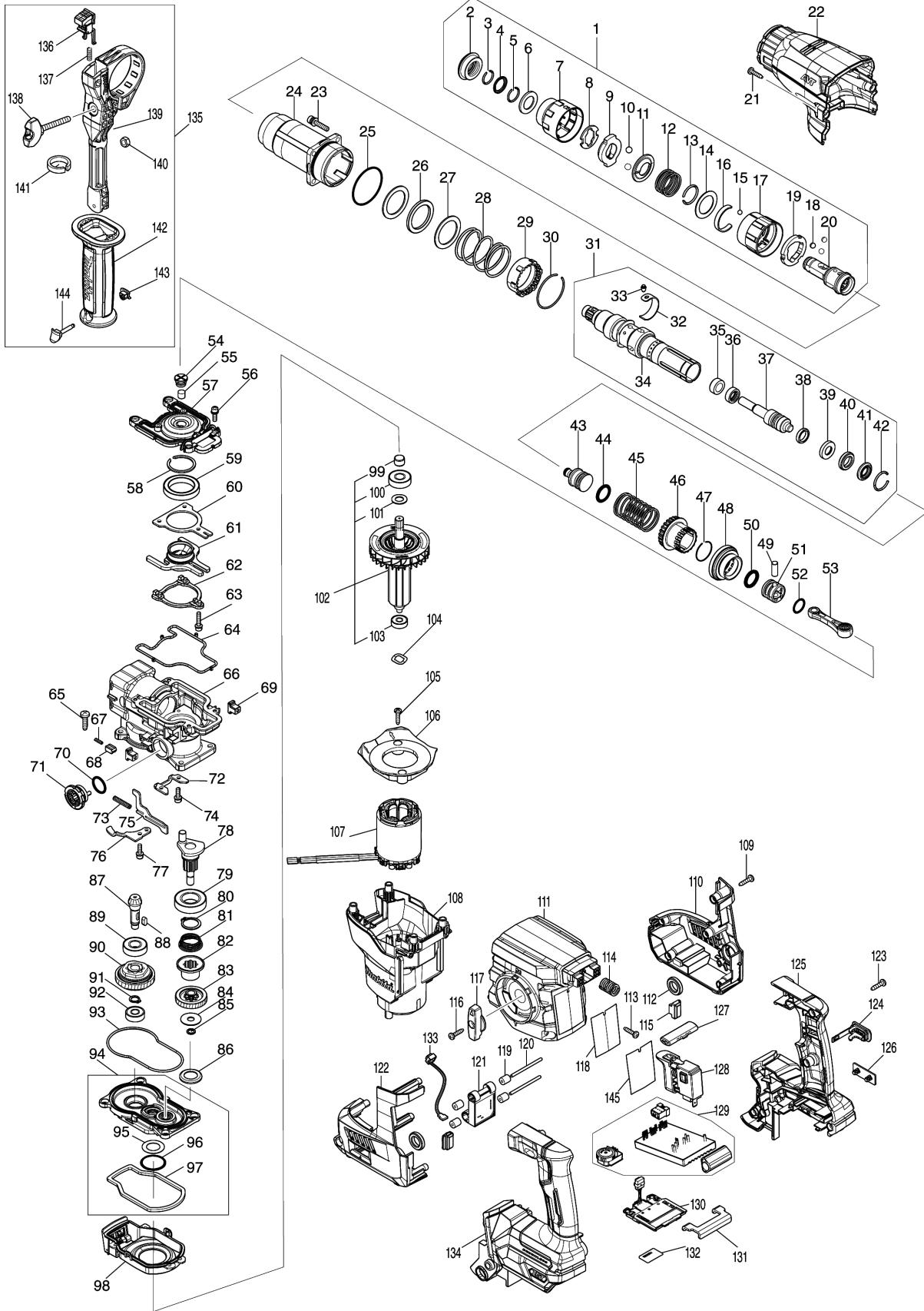


# Model No.HR009G 30MM CRDLS COMBINATION HAMMER





Model No.HR009G 30MM CRDLS COMBINATION HAMMER

Position	Artikel-Nr.	Beschreibung	I/C	Stk.	New/Old	Opt. 1	Opt. 2	Hinweis
001	127219-7	TOOL HOLDER ASSEMBLY		1				
D10		INC. 2-20						
002	422570-3	CAP 35		1				
003	233989-9	RING SPRING 14		1				
004	346221-3	WASHER 16		1				
005	233992-0	RING SPRING 15		1				
006	253467-3	WASHER 17		1				
007	459162-5	CHUCK COVER		1				
008	347687-0	PLATE		1				
009	310926-1	STOPPER		1				
010	216022-2	STEEL BALL 7.0		2				
011	347745-2	GUIDE WASHER		1				
012	232554-1	COMPRESSION SPRING 26		1				
013	233924-7	RING SPRING 21		1				
014	253468-1	FLAT WASHER 24		1				
015	216018-3	STEEL BALL 5.0		1				
016	232555-9	LEAF SPRING		1				
017	459159-4	CHANGE COVER A		1				
018	216013-3	STEEL BALL 6		3				
019	347496-7	CHANGE RING A		1				
020	327264-4	TOOL HOLDER		1				
021	266326-2	TAPPING SCREW 4X18		2				
022	459167-5	BARREL COVER		1				
023	266793-1	HEX. S.H.B. M5X25 WITH WR		4				
024	140J35-0	BARREL COMPLETE		1				
C10	213636-8	OIL SEAL 25		1				
025	213620-3	O RING 46		1				
026	422493-5	RUBBER RING 31		1				
027	267354-0	FLAT WASHER 31		2				
028	232496-9	COMPRESSION SPRING 37		1				
029	419986-1	LOCK SLEEVE		1				
030	233952-2	RING SPRING 41		1				
031	136305-3	TOOL HOLDER ASS'Y		1				
D10		INC. 32-42						
032	347501-0	LEAF SPRING		1				
033	256598-7	SHOULDER PIN 4		1				
034	327272-5	TOOL HOLDER GUIDE		1				
035	327515-5	SLEEVE 11		1				
036	327516-3	RING 11		1				
037	140S90-6	IMPACT BOLT B COMPLETE		1				
038	213880-7	SEAL RING 12		1				
039	327268-6	RING 11		1				

Model No.HR009G 30MM CRDLS COMBINATION HAMMER

Position	Artikel-Nr.	Beschreibung	I/C	Stk.	New/Old	Opt. 1	Opt. 2	Hinweis
040	424267-0	CUSHION RING 12		1				
041	327271-7	WASHER 11		1				
042	231987-7	RING SPRING 21		1				
043	327266-0	STRIKER		1				
044	213881-5	O RING 16		1				
045	232497-7	COMPRESSION SPRING 27		1				
046	327276-7	DRIVING SLEEVE		1				
047	232501-2	RING SPRING 24		1				
048	226868-8	SPIRAL BEVEL GEAR 31		1				
049	268122-4	PIN 7		1				
050	213881-5	O RING 16		1				
051	319807-6	PISTON		1				
052	213226-7	O RING 16		1				
053	140J36-8	CONNECTING ROD COMPLETE		1				
054	459180-3	FILTER CAP		1				
055	443153-6	FELT		1				
056	922123-3	HEX. SOCKET HEAD BOLT M4X14		4				
057	319802-6	CRANK CAP		1				
058	961140-8	RETAINING RING		1				
059	211423-9	BALL BEARING 6806DDW		1				
060	347500-2	BEARING RETAINER B		1				
061	140J31-8	COUNTER WEIGHT COMPLETE		1				
062	310927-9	WEIGHT RETAINER		1				
063	266948-8	HEX S. H. BOLT M4X20 WITH WR		3				
064	459182-9	SEAL RING B		1				
065	266021-4	TAPPING SCREW 5X20		4				
066	140J33-4	CRANK HOUSING COMPLETE		1				
067	232499-3	COMPRESSION SPRING 2		1				
068	310929-5	PUSH CORN		1				
069	455165-7	FIX GUIDE		2				
070	213262-3	O RING 18		1				
071	459175-6	LINK LEVER		1				
072	347497-5	BEARING RETAINER A		1				
073	234019-9	COMPRESSION SPRING 4		1				
074	922123-3	HEX. SOCKET HEAD BOLT M4X14		2				
075	345814-3	LINK PLATE		1				
076	347498-3	GUIDE PLATE		1				
077	922123-3	HEX. SOCKET HEAD BOLT M4X14		1				
078	140M22-7	CRANK SHAFT COMPLETE		1				
079	211323-3	BALL BEARING 6904LLU		1				

Model No.HR009G 30MM CRDLS COMBINATION HAMMER

Position	Artikel-Nr.	Beschreibung	I/C	Stk.	New/Old	Opt. 1	Opt. 2	Hinweis
080	961060-6	RETAINING RING S-20		1				
081	232498-5	CONICAL COMP. SPRING 21-26		1				
082	327273-3	CLUTCH		1				
083	226869-6	HELICAL GEAR 31		1				
084	267353-2	FLAT WASHER 8		1				
085	961034-7	RETAINING RING		1				
086	345818-5	CUP WASHER 16		1				
087	226867-0	SPIRAL BEVEL GEAR 8		1				
088	254239-9	KEY 4		1				
089	211131-2	BALL BEARING 6001DDW		1				
090	125386-2	TORQUE LIMITER ASS'Y		1				
091	961006-2	RETAINING RING S-10		1				
092	210005-4	BALL BEARING 608DDW		1				
093	459181-1	SEAL RING A		1				
094	136330-4	GEAR HOUSING ASS'Y		1				
D10		INC. 95-97						
095	253749-3	FLAT WASHER 16		1				
096	213445-5	O-RING 26		1				
097	459183-7	SPONGE SHEET		1				
098	140J32-6	AIR DUCT COMPLETE		1				
099	331775-3	SLEEVE 10		1				
100	211097-6	BALL BEARING 6000LLB		1				
101	253828-7	FLAT WASHER 10		1				
102	519722-6	ROTOR ASS'Y		1				
D10		INC. 99-101,103						
103	210022-4	BALL BEARING 626DDW		1				
104	253555-6	WAVE WASHER 12		1				
105	266326-2	TAPPING SCREW 4X18		2				
106	413F13-2	BAFFLE PLATE		1				
107	629A96-4	STATOR		1				
108	141H81-4	MOTOR HOUSING COMPLETE		1				
C10	263027-3	RUBBER PIN 4		1				
109	266326-2	TAPPING SCREW 4X18		5				
110	183V77-3	HOUSING SET		1				
D10		INC. 122						
111	413F12-4	HANDLE BASE		1				
112	459184-5	CUSHION RING 12		2				
113	266326-2	TAPPING SCREW 4X18		4				
114	232500-4	COMPRESSION SPRING 10		1				
115	422863-8	BATTERY CUSHION		2				
116	266326-2	TAPPING SCREW 4X18		1				
117	459174-8	CHANGE LEVER		1				

Model No.HR009G 30MM CRDLS COMBINATION HAMMER

Position	Artikel-Nr.	Beschreibung	I/C	Stk.	New/Old	Opt. 1	Opt. 2	Hinweis
118	8119X5-5	HR009G NAME PLATE		1				
119	422472-3	SPONGE SLEEVE 3		4				
120	256886-2	ROD 3		2				
121	620J19-9	ACCELEROMETER CIRCUIT		1				
122	183V77-3	HOUSING SET		1				
D10		INC. 110						
123	266326-2	TAPPING SCREW 4X18		6				
124	140G30-2	CAP COMPLETE		1				
C10	213A05-9	O-RING16		1				
125	183V96-9	HANDLE SET		1				
C10	263005-3	RUBBER PIN 6		2				
C20	8005T5-8	XGT LOGO LABEL		1				
D10		INC. 134						
126	459753-2	CAP		1				
127	453124-5	F/R CHANGE LEVER		1				
128	651439-6	SWITCH C3JR-4B-2		1				
129	620J18-1	CONTROLLER		1				
130	632P65-6	TERMINAL UNIT		1				
131	347885-6	SUPPORT PLATE		1				
132	8119Y1-0	HR009G SERIAL NO. LABEL		1				
133	620G34-5	LED CIRCUIT		1				
134	183V96-9	HANDLE SET		1				
C10	263005-3	RUBBER PIN 6		2				
C20	8005T5-8	XGT LOGO LABEL		1				
D10		INC. 125						
135	126882-3	GRIP ASSEMBLY		1				
D10		INC. 136-144						
136	144959-2	LOCK BUTTON COMPLETE		1				
137	233360-7	COMPRESSION SPRING 4		1				
138	265625-9	THUMB SCREW M6X50		1				
139	458355-1	SIDE HANDLE BASE		1				
140	931302-2	HEX. NUT M6		1				
141	422258-5	SPONGE SHEET		1				
142	458357-7	GRIP 36		1				
143	422255-1	CAP		1				
144	161838-9	FIX PIN		1				
145	8052T1-3	CLEAR LABEL		1				
A01	331886-4	DEPTH GAUGE		1				
A02	198993-4	GREASE VESSEL SET		1				
A03	443122-7	CLOTH		1				
A04	191F46-4	DRILL CHUCK SET		1				
A05B	821875-2	PLASTIC CASE		1				

Please order the parts with part number.

Print Date 3/2/2022

Model No.HR009G 30MM CRDLS COMBINATION HAMMER

Position	Artikel-Nr.	Beschreibung	I/C	Stk.	New/Old	Opt. 1	Opt. 2	Hinweis
C10	162271-8	LATCH		2				
A05C	821875-2	PLASTIC CASE		1				
C10	162271-8	LATCH		2				
A05D	821875-2	PLASTIC CASE		1				
C10	162271-8	LATCH		2				
A06B	8053B3-9	HR009GZ02 PLASTIC CASE LABEL		2				
A07B	***DX11	DUST COLLECTION SYSTEM SET		1				
C10	459206-1	SEALING CAP		5				
D10		COMPO-PARTS						
A07D	***DX11	DUST COLLECTION SYSTEM SET		1				
C10	459206-1	SEALING CAP		5				
D10		COMPO-PARTS						
A10C	***DC40RA	DC40RA FAST CHARGER		1				
D10		COMPO-PARTS						
A10D	***DC40RA	DC40RA FAST CHARGER		1				
D10		COMPO-PARTS						
A11C	412393-7	BATTERY COVER		1				
A11D	412393-7	BATTERY COVER		1				
A12C	191B26-6	BATTERY BL4040 SET		2				
A12D	191B26-6	BATTERY BL4040 SET		2				
B01	1910S0-5	HAMMER SERVICE KIT		1				
C10	181490-7	HAMMER GREASE 30G		2				
D10		INC. 2,3,5,10,33,37,38,40,42,						
D20		INC. 44,47,50						

Please order the parts with part number.

Print Date 3/2/2022